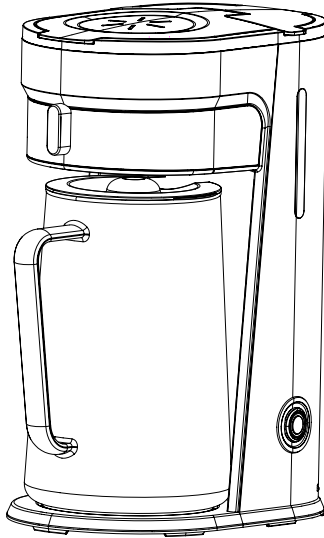


morphy richards®

smart ideas for your home

Iced Coffee Maker



Model: MRCM90BK

INSTRUCTION MANUAL

Read these instructions carefully before
using this appliance for the first time.

STORE THESE INSTRUCTIONS CAREFULLY

For product hints and tips plus more join us at

www.morphyrichards.com.au

 facebook.com/MorphyRichardsAUS

 instagram.com/morphyrichardsau

IMPORTANT SAFETY INSTRUCTIONS

WARNING

To reduce the risk of fire, electric shock, injury to persons or damage to property, follow basic precautions including the following:

- **WARNING:** Misuse of appliance could cause personal injury.
- Do not let the appliance operate without water.
- Make sure that the outlet voltage corresponds to the voltage stated on the rating label of the appliance.
- This appliance is not intended for use by persons (including children) with reduced physical, sensory or mental capabilities, or lack of experience and knowledge, unless they have been given supervision or instruction concerning use of the appliance by a person responsible for their safety.
- Close supervision is necessary when the appliance is operating. Do not keep the appliance in the standby state for a long time. Never allow children to operate the appliance.
- Cleaning and user maintenance should not be done by children.
- Keep the appliance and cord out of the reach of children.
- This appliance must be used in accordance with the instructions and must not be used for other purposes.
- To disconnect, press the On/Off button at the side of the appliance until the light goes off and remove the plug from wall outlet.
- The use of attachments or tools not recommended or sold by Morphy Richards, may cause fire, electric shock or injury.

- This appliance is intended to be used in household and similar applications such as:
 - staff kitchen areas in shops, offices and other working environments;
 - farm houses;
 - by clients in hotels, motels and other residential type environments;
 - bed and breakfast type environments.

Location

- For indoor use only. Do not use outdoors or near water.
- Always locate your appliance away from the edge of the worktop. Do not set a hot container on a hot or cold surface.
- Ensure that the appliance is used on a firm, flat surface.
- The appliance shall not be placed in a cabinet when in use.

Power cord

- **WARNING:** This appliance should NOT be used with extension leads and/or power boards.
- The power cord should reach from the socket to the appliance without straining the connections.
- If the power cord is damaged, it must be replaced by the manufacturer, its service agent or similarly qualified persons in order to avoid a hazard.
- Remove the plug from the socket, grasp the plug and pull out the power cord, do not pull on the cord directly.
- Do not let the cord hang over the edge of a table or counter and keep it away from any hot surfaces.
- Do not let the cord run across an open space e.g. between a low socket and table.

Personal safety

- **WARNING:** To protect against fire, electric shock and personal injury do not immerse cord, plug and appliance in water or any other liquid.
- **WARNING:** The appliance surface is subject to residual heat after use.
- The temperature of accessible surfaces may be high when the appliance is operating.
- Unplug from the outlet before cleaning and allow to cool before putting on or taking off parts and before cleaning.
- Do not move the appliance while switched on. Scalding may occur if the cover is opened during brewing cycles.
- Extreme caution must be used when moving an appliance containing hot liquids.
- Do not use the glass carafe if it shows any signs of cracks or has a loose or weakened handle. The glass carafe is fragile.

Treating scalds

- Be careful of hot steam, as it can be ejected from the appliance.
- Run cold water over the affected area immediately. Do not stop to remove clothing, seek medical advice quickly.

Electrical requirements

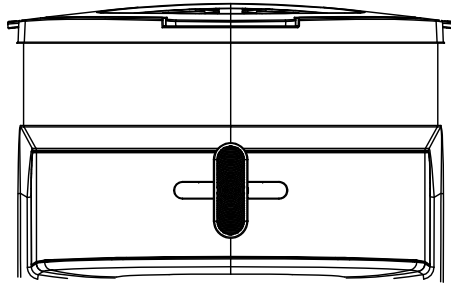
- **WARNING:** This appliance should NOT be used with extension leads and/or power boards.
- Check that the voltage on the rating label of your appliance corresponds with your house electricity supply which must be A.C.

READ CAREFULLY AND KEEP FOR FUTURE REFERENCE

SPECIFICATIONS

Model:	MRCM90BK
Colour:	Black
Water Tank Capacity:	900ml
Glass Carafe Capacity:	2.5L
Travel Cup Capacity:	600ml
Rated Power:	700W
Rated Voltage & Frequency:	220-240V~ 50-60Hz
Dimensions (W x D x H):	167 x 275 x 348mm
Net Weight:	2.1kg

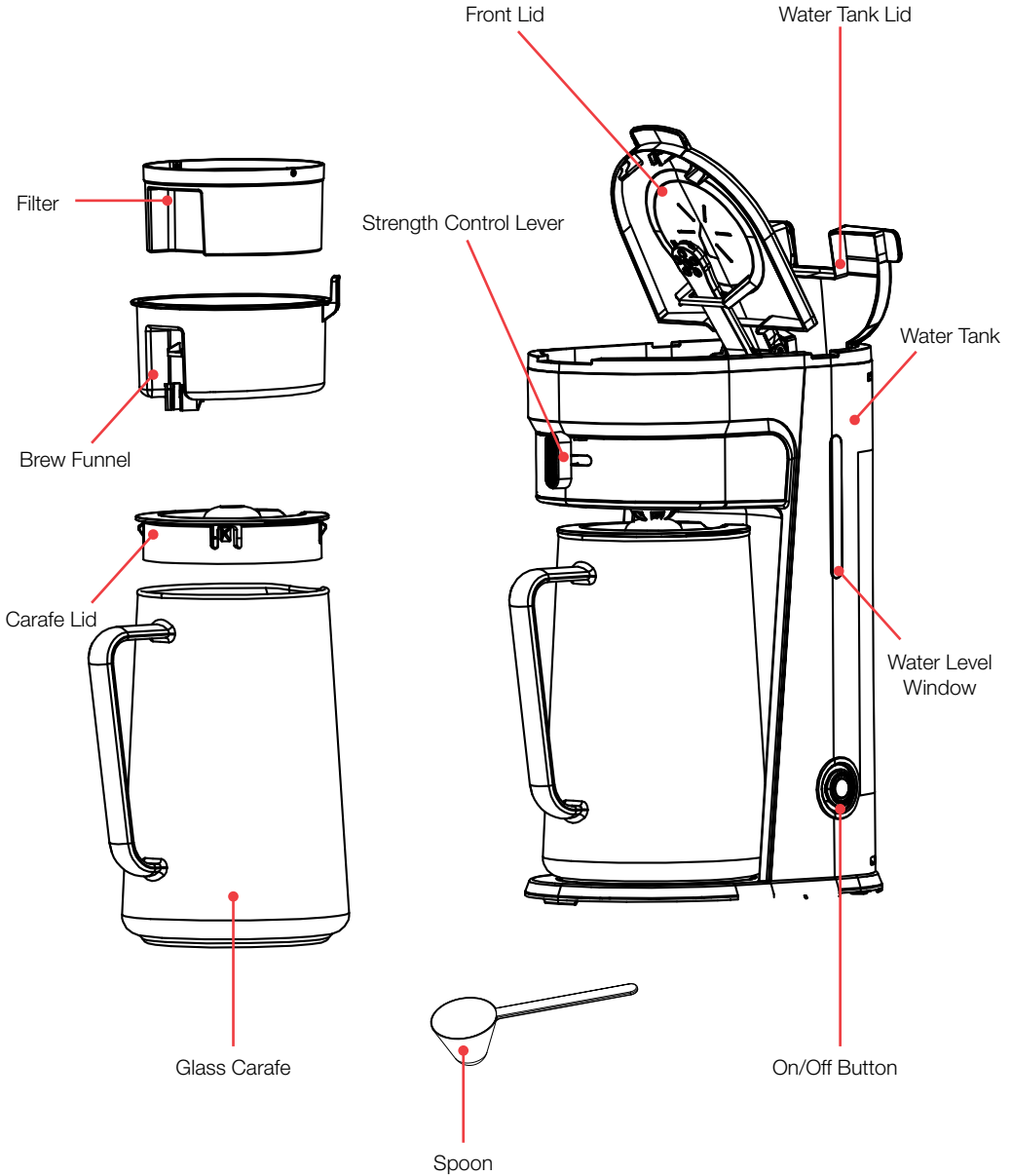
STRENGTH CONTROL LEVER



NOTE: The brewing concentration strength increases from left to right using the Strength Control lever.

The MIN brewing setting will take approximately 6:30 to complete and will provide the weakest concentration. If MAX brewing is selected, the unit will take 13-14 minutes to complete the brewing cycle and the strongest concentration will be poured.

PRODUCT OVERVIEW



BEFORE FIRST USE

1. Remove all packaging materials.
2. Check that all accessories are complete and the appliance is not damaged.
3. Clean all parts to remove any dust or manufacturing residue.
4. Fill the glass carafe to the "7 CUP" marking with water.
5. Lift the water tank lid of the unit, exposing the water tank.
6. Add water from the glass carafe into the water tank to the MAX fill level on the water window.
7. Close the water tank lid. Open the front lid and ensure the brew funnel and filter are assembled correctly, otherwise the front lid can not be closed.
8. Ensure the glass carafe lid is on securely and place the glass carafe under the spout and on the recessed carafe holder.
9. Press the "ON/OFF" button on the side of the unit and ensure the LED illuminates. The brewing process will begin.
10. Wait 6-13 minutes for brewing to complete, depending on the brewing concentration strength selected. For a stronger concentration, choose MAX, which will take approximately 13 minutes. Once the dripping stops, press the "ON/OFF" button to stop the flow of water. NOTE: The brewing process can be paused for 30 seconds by pressing the "ON/OFF" button at any time. The appliance will continue brewing once the "ON/OFF" button is pressed again.
11. Discard the water from the glass carafe and repeat steps 6 to 10 several times without coffee grounds to ensure the unit is clean.
12. Wash the glass carafe thoroughly with soapy water.

USING YOUR ICED COFFEE MAKER

1. Plug the Iced Coffee Maker plug into the mains power.

WARNING: To prevent injury from hot steam or potential damage to the unit, do not plug the appliance in until water is in the tank and the glass carafe is put in place under the drip spout.

2. Fill the glass carafe to the "7 CUP" marking with water. For best results, it is recommended to use filtered water.
3. Lift the water tank lid of the unit, exposing the water tank.
4. Add water from the glass carafe into the water tank to the MAX fill level on the water window.

WARNING: Never fill water tank above MAX fill level.

5. Close the water tank lid. Open the front lid and ensure the brew funnel and filter are assembled correctly, otherwise the front lid can not be closed.
6. With the spoon provided, pour 5-6 level scoops of ground coffee into the filter. This is the recommended amount for the 900ml glass carafe. However, you may want to add more or less to suit your taste or add additional milk or water.
7. Close the front lid and add some ice to the glass carafe but do not exceed the "ICE" marking.
8. Ensure the glass carafe lid is on securely and place the glass carafe under the spout and on the recessed carafe holder.
9. Press the "ON/OFF" button on the side of the unit and ensure the LED illuminates. The brewing process will begin.
10. Wait 6-13 minutes for brewing to complete, depending on the brewing concentration strength selected. For a stronger concentration, choose MAX, which will take approximately 13 mins.

USING YOUR ICED COFFEE MAKER

NOTE: The brewing process can be paused for 30 seconds by pressing the “ON/OFF” button at any time. The appliance will continue brewing once the “ON/OFF” button is pressed again.

11. Add milk or water to taste and any syrups or flavours to create your drink just how you like it.

12. For convenience, you can pour the contents of the carafe into the travel cup. Screw the lid on the travel cup securely and insert the straw in the lid and enjoy!

NOTE: Only use the glass carafe with the appliance. The pour volume is only designed for the carafe and NOT the travel cup.

TIPS FOR YOUR ICED COFFEE MAKER

- A clean appliance is essential for making great tasting drinks. Regularly clean the appliance as specified in the “CARE & CLEANING” section on page 10. Always use fresh, cold water in the appliance.
- Store unused coffee grounds in a cool, dry place. After opening a package of coffee grounds, reseal it tightly and store it in a refrigerator to maintain its freshness.
- For an optimum coffee taste, buy whole coffee beans and grind them finely just before brewing.
- Do not reuse coffee grounds, as this will reduce the coffee flavour greatly. Reheating coffee is not recommended as coffee is at its peak immediately after brewing.
- Clean the appliance when over extraction causes oiliness. Small oil droplets on the surface of brewed, black coffee are due to the extraction of oil from the coffee powder.
- Oiliness may occur more frequently if heavily roasted coffees are used.

DECALCIFICATION

Minerals like calcium and limestone can be found in water and may leave deposits in the appliance and can affect its performance. De-calcifying the appliance is an important part of ensuring your drinks always tastes great! We recommend de-calcifying the appliance once a month to keep it at peak performance following the steps below:

- 1.** Prepare 1 cup (240ml) of undiluted White vinegar. Lift the rear lid of the unit, exposing the water tank and pour the vinegar into the water tank.
- 2.** Close the water tank lid. Open the front lid and ensure the brew funnel and filter are assembled correctly, otherwise the front lid can not be closed.
- 3.** Ensure the glass carafe lid is on securely and place the glass carafe under the spout and on the recessed carafe holder.
- 4.** Press the "ON/OFF" button on the side of the unit and ensure the LED illuminates and run a brew cycle.
- 5.** Once the cycle has stopped, discard the contents of the glass carafe. Rinse the glass carafe with clean water.
- 6.** Fill the glass carafe to the "7 CUP" marking with clean water and pour directly into the water tank.
- 7.** Place the glass carafe under the spout and press the "ON/OFF" button to run a brew cycle.
- 8.** After the cycle finishes, discard the water and rinse the glass carafe thoroughly with clean water.
- 9.** Repeat steps 6-8 one more time, to ensure the appliance is thoroughly rinsed.

CARE & CLEANING

1. Clean all detachable parts after each use in hot soapy water.
2. Wipe the exterior surface of the unit with a soft, damp cloth to remove stains.
3. Water droplets may buildup in the funnel and drip onto the unit base during brewing. To control the dripping, wipe the area with a clean, dry cloth after each use.
4. Use a damp cloth to gently wipe the glass carafe holder. Never use abrasive cleaners to clean it.
5. The glass carafe, filter and brew funnel are dishwasher safe, but the filter and funnel should be placed on the top rack.

NOTE: Coffee contains natural tannins and oils and therefore will stain the nylon filter after use. This is a natural phenomenon, but soaking the filter in White vinegar and hot water may assist in reducing some of these stains.

MAINTENANCE

If the unit fails to operate efficiently, is broken or other problems arise, unplug and do not operate.

Ask for advice by calling your local after sales service agent or the Customer Care Centre on 1300 556 816 (AU) / 0800 666 2824 (NZ).

WARRANTY

Please refer to the warranty card in the box for warranty information. For any troubleshooting advice, please contact the relative Customer Care Centre below.

Glen Dimplex Australia Pty Ltd
8 Lakeview Drive,
Scoresby 3179, Victoria
Australia
Ph: 1300 556 816

Glen Dimplex New Zealand Ltd
38 Harris Road, East Tamaki,
Auckland 2013
New Zealand
Ph: 0800 666 2824



Recycling: Do not dispose of electrical appliances as unsorted municipal waste. Use separate collection facilities. Contact your local government for information regarding the collection systems available. If electrical appliances are disposed of in landfills or dumps, hazardous substances can leak into the ground water, polluting the food chain and damaging health and wellbeing.

Expanded Polystyrene Disposal: The websites listed below can assist in the responsible disposal of EPS (Expanded Polystyrene) packaging products.

Australia: <https://recyclingnearyou.com.au/polystyrene> and/or <http://epsa.org.au>

New Zealand: <https://greenbusinesshq.com/epsrecycling> and/or

<https://www.plastics.org.nz/environment/recycling-disposal/eps-recycling>

morphy richards®

Glen Dimplex Australia Pty Ltd
8 Lakeview Drive
Scoresby VIC 3179
Phone: 1300 556 816
Email: seasonal.support@glendimplex.com.au
Web: www.morphyrichards.com.au

morphy richards®

Glen Dimplex New Zealand Ltd
1 Ron Driver Place
East Tamaki, Auckland
Phone: 09 274 8265
Email: sales@glendimplex.co.nz
Web: www.morphyrichards.co.nz

© Glen Dimplex Australia. All rights reserved. Material contained in this publication may not be reproduced in whole or in part, without prior permission in writing of Glen Dimplex Australia.