

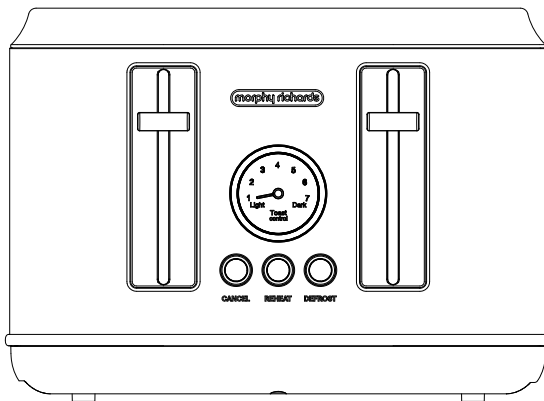
Boutique Retro 4 Slice Toaster

INSTRUCTION MANUAL

Model: MRRT4BK / MRRT4CR / MRRT4TB

Read these instructions carefully before
using this appliance for the first time.

STORE THESE INSTRUCTIONS CAREFULLY



For product hints and tips plus more join us at

www.morphyrichards.com.au



facebook.com/MorphyRichardsAUS

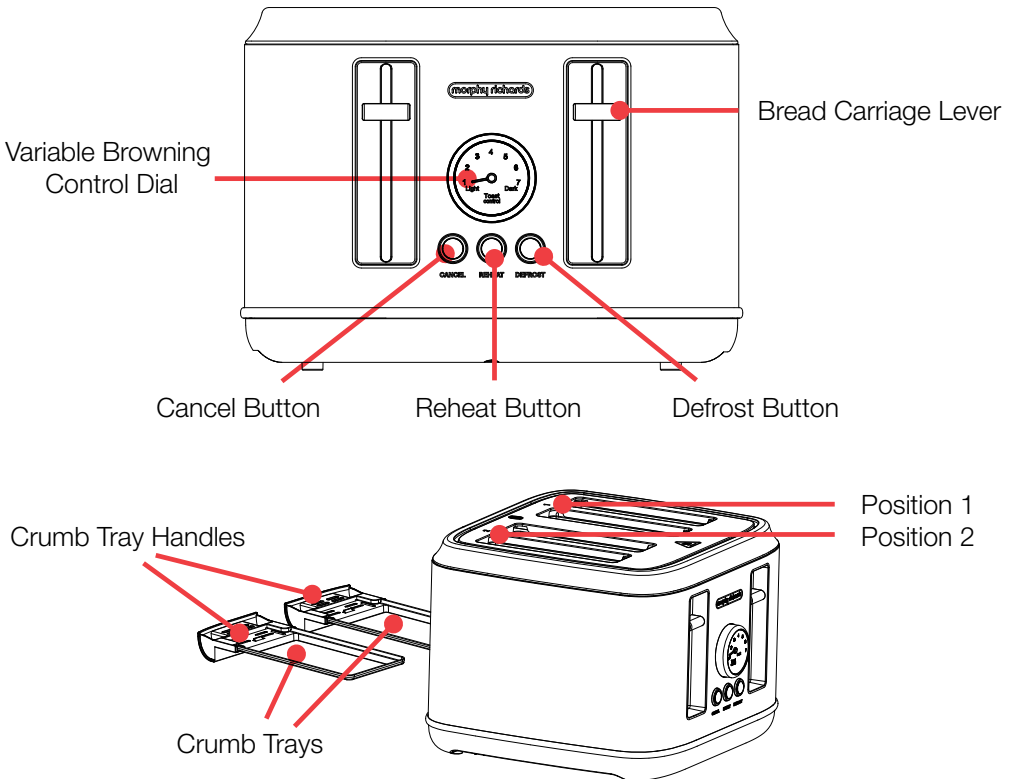


instagram.com/morphyrichardsau

SPECIFICATIONS

Model:	MRRT4BK	MRRT4CR	MRRT4TB
Colour:	Black	Chilli Red	Thunder Blue
Rated Voltage:	220-240V~ 50-60Hz		
Rated Power:	1900-2300W		
Capacity:	4 Slice		
External Dimensions (L x W x H):	278 x 287 x 210mm		
Net Weight:	2.6 Kg		

NAMES OF PARTS AND ACCESSORIES





CAUTION: HOT SURFACE

PLEASE BE AWARE OF HOT SURFACES

HANDLE WITH CARE

The use of any electrical appliance requires the following common sense safety rules.

Please read these instructions carefully before using the product.

- This appliance is not intended for use by persons (including children) with reduced physical, sensory or mental capabilities, or lack of experience and knowledge, unless they have been given supervision or instruction concerning use of the appliance by a person responsible for their safety.
- Children should be supervised to ensure that they do not play with the appliance.
- Keep the appliance and its cord out of reach of children.
- Cleaning and user maintenance shall not be done by children.
- **WARNING:** Misuse of appliance could cause personal injury.
- This appliance is not intended to be operated by means of an external timer or a separate remote-control system.
- Bread may burn, therefore toasters must **NOT** be used near or below curtains and other combustible materials.
- The use of attachments or tools not recommended or sold by the appliance manufacturer may cause fire, electric shock or injury.
- Do **NOT** attempt to remove food with forks or other utensils into the toaster. As well as damaging the toaster, there is a high risk of electric shock.
- Should some toast remain blocked in the toaster, remove the plug from the mains, wait for the toaster to cool down until it

is safe to touch, then turn the toaster over and shake it gently.

- **WARNING:** Avoid using small bread slices less than 85mm length, you must pay attention to the potential risk of burning when taking out the bread.
- Clean the crumb trays regularly, as crumbs can smoke or burn.
- Over-sized food, metal foil packages or utensils must **NOT** be inserted in the toaster as they may cause fire or electric shock.

Location

- This appliance is intended to be used in household and similar applications such as: farm houses; by clients in hotels, motels and other residential type environments; bed and breakfast type environments. It is not suitable for use in staff kitchen areas in shops, offices and other working environments.
- Always locate your appliance away from the edge of the worktop.
- Ensure that the appliance is used on a firm, flat surface.
- Do **NOT** use the appliance outdoors or near water.

Power cord

- Do **NOT** let the power cord hang over the edge of the worktop where a child could reach it.
- Do **NOT** let the power cord run across an open space e.g. between a low socket and a table.
- Do **NOT** let the power cord run across a cooker or other hot area which might damage the cable.
- The power cord should reach from the socket to the appliance without straining the connections.
- If the power cord is damaged, it must be replaced by the manufacturer, it's service agent or similarly qualified person in order to avoid a hazard.
- **WARNING:** This appliance is **NOT** to be used with extension leads and/or power boards.

Personal safety

- **WARNING:** To protect against fire, electric shock and personal injury do not immerse cord, plug and appliance in water or any other liquid.
- Do **NOT** touch the hot surface. Use dials, levers or knobs only.
- Unplug from the outlet before cleaning and when not in use.
- Allow to cool before putting on or taking off parts and before cleaning.
- The temperature of accessible surfaces may be high when the appliance is operating.
- Surfaces are liable to get hot during use.

Other safety considerations

- Do **NOT** place the appliance on or near a hot gas or electric burner or in a heated oven.
- **WARNING:** The appliance must not be immersed for cleaning.
- **CAUTION:** To prevent damage to the appliance, do not use alkaline cleaning agents when cleaning. Use a soft cloth and detergent.

Electrical requirements

- Check that the voltage on the rating plate of your appliance corresponds with your house electricity supply which must be A.C. (Alternating Current).
- This appliance has been incorporated with a grounded plug. Please ensure the wall outlet in your house is well earthed.
- **WARNING:** This appliance must be earthed.

BEFORE FIRST USE

- As there is manufacturing residue or oil remaining in the toaster and on the heat element, it usually emits an odour when first used. This is normal and will not occur after regular uses.
- Before toasting the first slice of bread it is strongly suggested to operate the appliance following the operating instructions on the next page, except without bread.

- The toaster controls operate each of the two slot positions. In order to use the toasting slots in position 2, position 1 **MUST** be activated first. If only toasting one or two slices of bread, you **MUST** use position 1 (right hand slots).
- Make sure the crumb trays are completely in place before using.
- Plug the power cord into the outlet.

OPERATING INSTRUCTIONS

- Place the bread into the bread slots in position 1 (right hand side of the toaster) for one or two slices only.
- Turn the Variable Browning Control Dial to the desired setting, it is recommended to use setting 4 for the first time.
- Depress the Bread Carriage Lever. The toaster will begin toasting and the Cancel button light will illuminate.

NOTE: The carriage lever will only depress and hold in place when the appliance is connected to the power supply.

- When completed, the Bread Carriage Lever will automatically rise and lift the toast from the toaster.
- During the toasting process, you can stop this at any time by pressing the Cancel button.
- To toast frozen bread, do not adjust the Variable Browning Control from your normal setting. Place the frozen bread in the bread slots, depress the Bread Carriage Lever and press the Defrost Button. The button will illuminate and the toaster will operate for a longer period defrosting and toasting the bread.
- If you want to reheat bread that was previously toasted but gone cold. Press the Bread Carriage Lever down vertically until it is positioned in place, then press the Reheat button. The Reheat and Cancel buttons will illuminate and the toaster will operate for a short period of time and will reheat the bread.
- If the toaster starts to smoke, press the Cancel button to stop toasting immediately.

- This toaster is equipped with a high lift function. So to remove smaller items such as muffins or crumpets, pull up the bread carriage levers and this lifts the bread approximately 20mm above the starting toasting position for easier removal.

CLEANING

WARNING: Crumbs will accumulate in the Crumb Trays and could catch fire if not emptied regularly.

- Disconnect the power supply before cleaning.
- When the appliance has cooled down completely, tap the sides of the body lightly to dislodge any crumbs lodged in the toaster. Pull out the Crumb Trays on the bottom of toaster by the Crumb Tray Handles and empty. If the toaster is used frequently, accumulated bread crumbs should be removed at least once a week. Make sure the Crumb Trays are completely closed before using the toaster again.

NOTE: Never operate the appliance without the Crumb Trays fitted.

- Wipe the outside body with a soft dry cloth after the toaster cools down. Never use polish.
- When not in use or when being stored for extended periods, the power cord may be wound under the bottom of toaster.

WARRANTY

Please refer to the warranty card in the box for warranty information. For any troubleshooting advice, please contact the relative Customer Care Centre below.

Glen Dimplex Australia Pty Ltd
8 Lakeview Drive,
Scoresby 3179, Victoria
Australia
Ph: 1300 556 816

Glen Dimplex New Zealand Ltd
38 Harris Road, East Tamaki,
Auckland 2013
New Zealand
Ph: 0800 666 2824



Recycling: Do not dispose of electrical appliances as unsorted municipal waste. Use separate collection facilities. Contact your local government for information regarding the collection systems available. If electrical appliances are disposed of in landfills or dumps, hazardous substances can leak into the ground water, polluting the food chain and damaging health and wellbeing.

morphy richards®

Glen Dimplex Australia Pty Ltd
8 Lakeview Drive
Scoresby VIC 3179
Phone: 1300 556 816
Email: sales@glendimplex.com.au
Web: www.morphyrichards.com.au