

Health and safety

Please read these instructions carefully before using your Mico Multi-Pot.

- Not suitable for conventional ovens or hobs/grills or combination microwave ovens.
- Ensure caution is taken when removing cookware from the microwave oven as it may be hot.
- Allow metal parts to cool before removing.
- Ensure metal parts are correctly fitted into moulded housing with no exposure, to prevent sparks occurring during cooking in microwave oven.
- Do not use repeatedly more than twice before allowing to cool for 30 minutes.
- Not for commercial use. Household use only.
- Do not use for more than 10 minutes continuously.

Your 1 year guarantee

Guarantee only available in the UK and Ireland. It is important to retain the retailer's receipt as proof of purchase. All Morphy Richards products are individually tested before leaving the factory. In the unlikely event of any appliance proving to be faulty within 28 days of purchase, it should be returned to the place of purchase for it to be replaced. If the fault develops after 28 days and within 12 months of original purchase, you should contact the Helpline number quoting Model number and Serial number on the product, or write to Morphy Richards at the address shown. You may be asked to return a copy of proof of purchase. Subject to exclusions, the faulty appliance will then be repaired or replaced as appropriate and dispatched usually within 7 working days of receipt. If, for any reason, this item is replaced or repaired during the 1 year guarantee period, the guarantee on the new item will be calculated from original purchase date. Therefore it is vital to retain your original till receipt or invoice to indicate the date of initial purchase. To qualify for the guarantee, the appliance must have been used according to the instructions supplied.

Cleaning and Care

Cleaning your Mico Multi-Pot after each use will prolong its life.

- Clean thoroughly before first use.
- Fully disassemble your Mico Multi-Pot to enable thorough cleaning (see overleaf for disassembly instructions).
- All parts are dishwasher safe.
- If hand washing, do so in warm soapy water with a soft cloth to protect the non-stick coating on metal parts. Do not use scouring pads or abrasive chemicals.
- Do not use metal utensils when removing food from your Mico Multi-Pot. Metal utensils may damage the non-stick coating on metal parts.

Contact Us

If you are having a problem with your appliance, please call our Helpline, as we are more likely to be able to help than the store you purchased the item from.

Please have the product name, model number and serial number to hand when you call to help us deal with your enquiry quicker:

UK: 0344 871 0944 | **EIRE:** 1800 409 119 | **SPARES:** 0344 873 0710

POSTAL: The After Sales Division, Morphy Richards Ltd
Mexborough, South Yorkshire, England, S64 8AJ

Talk To Us

If you have any questions or comments, or want some great tips or recipe ideas to help you get the most out of your products, join us online:

Blog: www.morphyrichards.co.uk/blog/

Facebook: [morphyrichardsuk](https://www.facebook.com/morphyrichardsuk)

Twitter: [@loveyourmorphy](https://twitter.com/loveyourmorphy)

Instagram: [morphyrichardsuk](https://www.instagram.com/morphyrichardsuk)

Website: www.morphyrichards.com

Discover the rest of the innovative **Mico** range at www.morphyrichards.com



morphyrichards® **mico multi-pot**



mico
microwave cookware



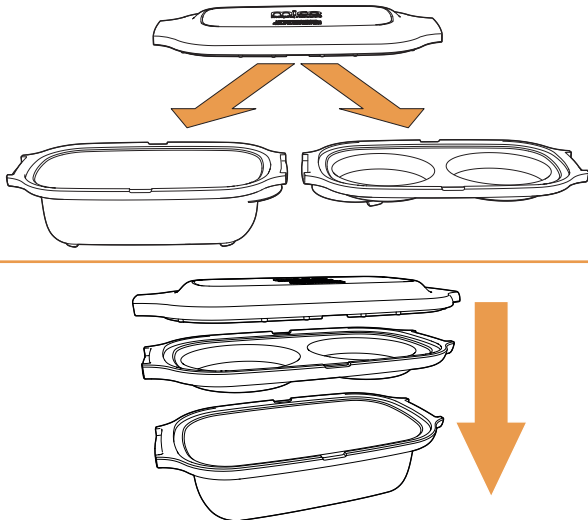
Product overview

- 1 Lid
- 2 Smaller Metal Multi-Pot Container for eggs and burgers etc.
- 3 Larger Metal Multi-Pot Container for potatoes and vegetables etc.

Both Containers coated in Heatwave Technology, they cook food like a conventional oven.

ADVANCED
HEATWAVE
TECHNOLOGY

Heatwave Technology uses the microwave power to mimic conventional cooking, creating crispy and delicious food



Assembly instructions - for use

- 1 Select either the larger or smaller of the two Multi-Pot Containers and set the other aside.
- 2 Place the Lid down onto the chosen Metal Container and fit it securely.

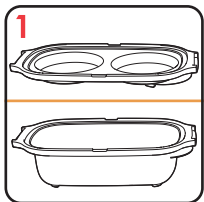
Assembly instructions - for storage

- 1 Place the smaller Multi-Pot Container into the larger one.
- 2 Place the Lid down on top and fit it securely.

Disassembly instructions - after use

- 1 Wait until Mico Multi-Pot has cooled.
- 2 Remove the Lid from the chosen Metal Container.

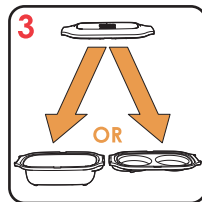
How to use



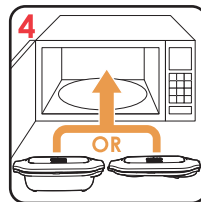
1 Select which Mico Multi-Pot you need to use. See the food examples in the table below.



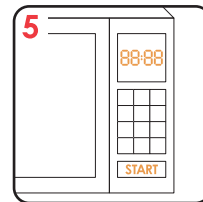
2 Lightly oil the Metal Container and place food inside. If cooking potatoes, prick them with a fork.



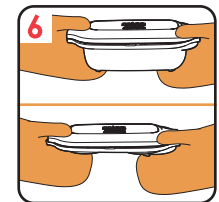
3 Place the Lid down onto the Metal Container and fit it securely.



4 Place in microwave oven.



5 Enter the correct time for your microwave oven as listed below, and press start.



6 Remove with oven gloves. Remove the Lid and serve.

WARNING: When opening, only touch the silicone Lid as the Metal Containers will be hot.

WARNING: If cooking meat, beware of hot fat. Carefully drain before serving.

Microwave oven times

- Max 1200W microwave oven, timings given are based on a 900W microwave.
- Microwave oven times may vary.
- For repeated use, reduce cooking times by 20 seconds.
- Do not use repeatedly more than twice before allowing to cool for 30 minutes.
- Timings may be adjusted to suit your personal tastes.

Multi-pot larger container

Food	Times
1x Jacket potato	5 mins lid off + 8 mins lid on*
2x Jacket potatoes	6 mins lid off + 8 mins lid on*
Mixed vegetables (eg. onion, cherry tomato, pepper, courgette)	5 mins + shake + 3 mins

* Turn potatoes when lid is put on

Multi-pot smaller container

Food	Times
Fried eggs	2 mins 30 secs – 3 mins
Beef burgers, from frozen	5 mins + flip + 3 mins