



Health and safety

Please read these instructions carefully before using your Mico Egg.

- Not suitable for conventional ovens or hobs/grills.
- If using in a combination oven, only use the microwave function.
- Ensure caution is taken when removing cookware from the microwave oven as it may be hot.
- Allow metal parts to cool before removing.
- Ensure metal parts are correctly fitted into moulded housing with no exposure, to prevent sparks occurring during cooking in microwave oven.
- Do not use repeatedly more than 4 times, allow to cool for 30 minutes.
- Not for commercial use. Household use only.
- Do not use for more than 10 minutes continuously.

Your 1 year guarantee

Guarantee only available in Australia, UK and Ireland. It is important to retain the retailer's receipt as proof of purchase. All Morphy Richards products are individually tested before leaving the factory. In the unlikely event of any appliance proving to be faulty within 28 days of purchase, it should be returned to the place of purchase for it to be replaced. If the fault develops after 28 days and within 12 months of original purchase, you should contact the Helpline number quoting Model number and Serial number on the product, or write to Morphy Richards at the address shown. You may be asked to return a copy of proof of purchase. Subject to exclusions, the faulty appliance will then be repaired or replaced as appropriate and dispatched usually within 7 working days of receipt. If, for any reason, this item is replaced or repaired during the 1 year guarantee period, the guarantee on the new item will be calculated from original purchase date. Therefore it is vital to retain your original till receipt or invoice to indicate the date of initial purchase. To qualify for the guarantee, the appliance must have been used according to the instructions supplied.

Cleaning and Care

Cleaning your Mico Egg after each use will prolong its life.

- Fully disassemble your Mico Egg to enable thorough cleaning (see overleaf for assembly instructions).
- All parts are dishwasher safe.
- If hand washing, do so in warm soapy water with a soft cloth to protect the non-stick coating on metal parts. Do not use scouring pads or abrasive chemicals.
- Do not use metal utensils when removing food from your Mico Egg. Metal utensils may damage the non-stick coating on metal parts.
- Clean thoroughly before first use.

Contact Us

If you are having a problem with your appliance, please call our Helpline, as we are more likely to be able to help than the store you purchased the item from.

Please have the product name, model number and serial number to hand when you call to help us deal with your enquiry quicker:

AU: 1300 556 816

POSTAL: 1340 Ferntree Gully Rd, Scoresby, VIC 3179

Talk To Us

If you have any questions or comments, or want some great tips or recipe ideas to help you get the most out of your products, join us online:

Blog: www.morphyrichards.com.au/blog

Facebook: [morphyrichardsau](https://www.facebook.com/morphyrichardsau)

Twitter: [@loveyourmorphy](https://twitter.com/loveyourmorphy)

Instagram: [@morphyrichardsau](https://www.instagram.com/morphyrichardsau)

Website: www.morphyrichards.com.au



Discover the rest of the innovative **Mico** range at www.morphyrichards.com

morphy richards®

mico **EGG**
microwave cookware

The **new** method
in your Microwave





Product overview

- 1 **Lid**
- 2 **Cool touch pod handles**
- 3 **Metal inner pods**
Coated in Heatwave Technology, they cook eggs like a conventional oven.
- 4 **Base**



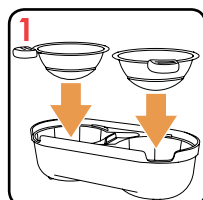
Assembly instructions

- 1 Place the metal inner pods into the base, ensuring they are fitted securely.
- 2 With the cool touch pod handles facing outwards, place the lid firmly onto the base.

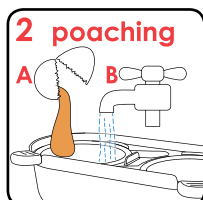
Disassembly instructions

- 1 Lift off the lid.
- 2 Use the cool touch pod handles to lift out the metal inner pods from the base.

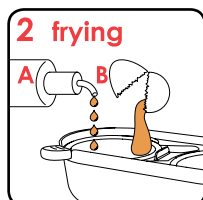
How to use



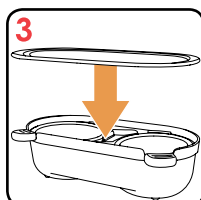
Place metal inner pod(s) into base with handle(s) facing outwards. You can use one or two pods, see times below.



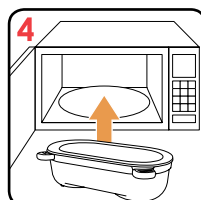
If poaching:
A: Crack egg(s) into inner metal pod(s).
B: Fill with cold water to the level marker.



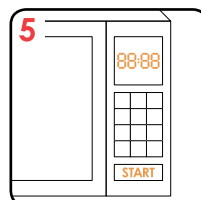
If frying:
A: Lightly oil the inner metal pod(s).
B: Crack egg(s) into inner pod(s).



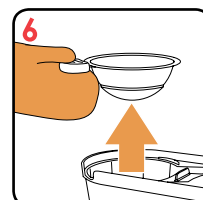
Place the lid onto the base.



Place in microwave oven on a microwavable plate.



Enter the correct time for your microwave oven and press start.



Remove pod(s) with oven gloves. Pour away any excess water (poach). Remove egg(s) with a spoon and serve.

Microwave oven times

- Max 1200W microwave oven.
- Microwave oven times may vary.
- For repeated use, reduce cooking times by 15 seconds.
- Do not use repeatedly more than 4 times, allow to cool for 30 minutes.
- Timings may be adjusted to suit your personal tastes.

1 metal inner pod It doesn't matter which side you use when cooking one egg. Remove the other metal inner pod.

Microwave oven power	Poaching	Frying
1000W - 1200W	2 mins 30 secs - 3 mins	1 min 45 secs - 2 mins 15 secs
900W - 1000W	2 mins 45 secs - 3 mins 15 secs	2 mins 15 secs - 2 mins 45 secs
800W - 900W	3 mins - 3 mins 30 secs	2 mins 45 secs - 3 mins 15 secs

2 metal inner pods

Microwave oven power	Poaching	Frying
1000W - 1200W	2 mins 45 secs - 3 mins 15 secs	2 mins - 2 mins 30 secs
900W - 1000W	3 mins - 3 mins 30 secs	2 mins 30 secs - 3 mins
800W - 900W	3 mins 15 secs - 3 mins 45 secs	3 mins - 3 mins 30 secs